

FOUNDATION PARK
MAIDENHEAD

BUILDING 8



BUILDING 8 OFFERS STATE OF THE ART OFFICE SPACE, SET IN A LANDSCAPED ENVIRONMENT

BUILDING 8
GROUND FLOOR
AVAILABLE TO LET
3,382 SQ FT



INDICATIVE FULLY FITTED
PLUG & PLAY OFFICES



Maidenhead Railway Station / Crossrail

A404M

M4 to M25 / Heathrow Airport

BUILDING 8

7

5

1

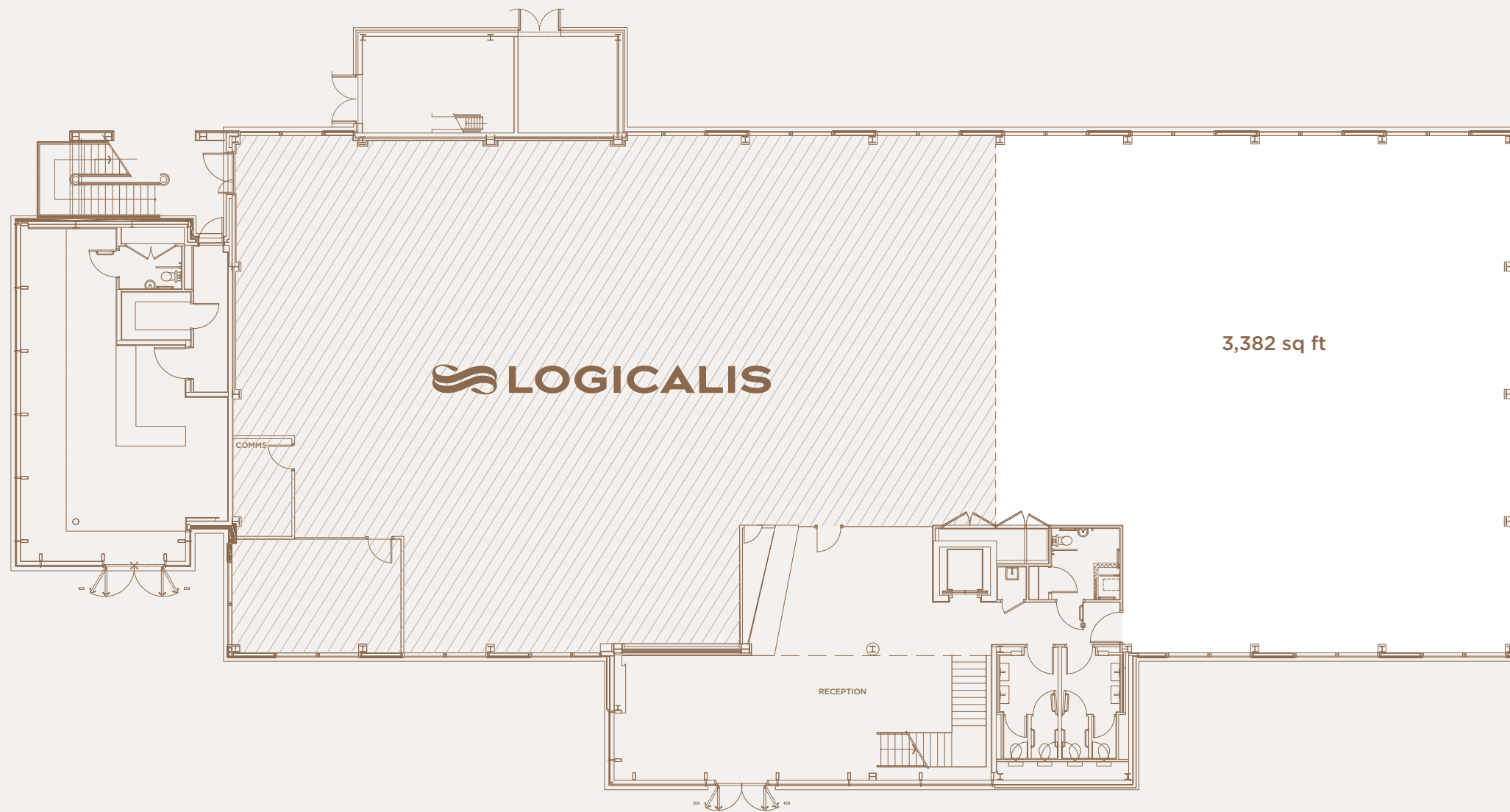
2

4

3

FOUNDATION PARK OFFERS AN ENVIRONMENT DESIGNED AND BUILT TO THE HIGHEST QUALITY

BUILDING 8 GROUND FLOOR



SPECIFICATIONS

- Fully Fitted - Plug & Play offices
- Flexible floorplate to suit your needs - ability to fit out the balance of the floor to suit
- High Speed Fibre connectivity
- Short form lease in place
- Operational within 4 weeks of lease completion
- VRF air conditioning
- Metal tiled suspended ceiling with LED lighting
- Finished floor to ceiling heights 2600mm
- 8 person passenger lifts
- BREEM 'Very Good' rating
- 24 cycle spaces
- CCTV, video entry and door access
- control systems
- EPC rating - EPC C(65)
- Parking Ratio 1:250 SQ FT

GROUND FLOOR

8,106 sq ft
3,382 sq ft - available

RECEPTION

753 sq ft



Buildings 8 - Available to Let



020 7629 5456

Toby Lumsden
tobylumsden@brayfoxsmith.com

James Shillabeer
jameshillabeer@brayfoxsmith.com



020 7935 5000

Henry Harrison
henry.harrison@cushwake.com

Anna Worboys
anna.worboys@cushwake.com

FOUNDATIONPARK.CO.UK

Cushman & Wakefield LLP and Bray Fox Smith on its own behalf and for vendors or lessors of this property, whose agent it is, gives notice that: 1. The particulars are produced in good faith, but are a general guide only and do not constitute any part of a contract. 2. No person in the employment of the agent(s) has any authority to make or give any representation or warranty whatsoever in relation to this property. 3. The property is offered subject to contract and unless otherwise stated all rents are quoted exclusive of VAT. 4. Nothing in these particulars should be deemed a statement that the property is in good condition, or that any services or facilities are in working order. 5. Unless otherwise stated, no investigations have been made regarding pollution, or potential land, air or water contamination. Interested parties are advised to carry out their own investigations if required.